

A Journal of the Gesellschaft Deutscher Chemiker

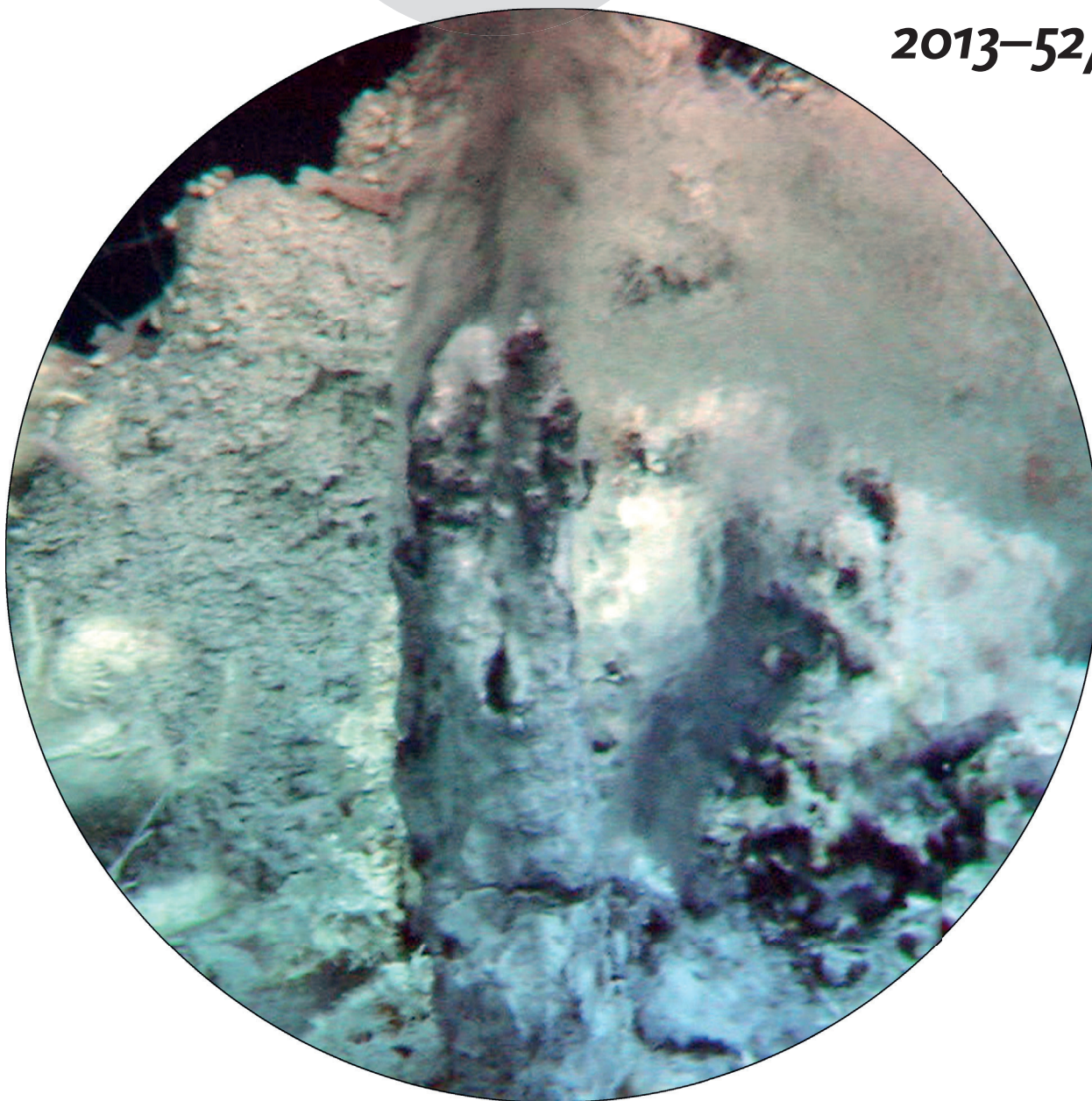
Angewandte Chemie

GDCh

International Edition

www.angewandte.org

2013–52/25



In the deep oceans ...

... at tectonically active areas, hot and compressed water, sometimes in the supercritical state, gushes out from the sea floor. The water is rapidly cooled to near-freezing temperature by surrounding cold water. Such a unique environment in the deep ocean inspired S. Deguchi and N. Ifuku to develop a novel bottom-up emulsification process, described in their Communication on page 6409 ff. The photograph (© JAMSTEC) shows a hydrothermal activity at the depth of 1492 m near Ryukyu Islands, Japan.

125 YEARS **Angewandte**
Chemie

WILEY-VCH